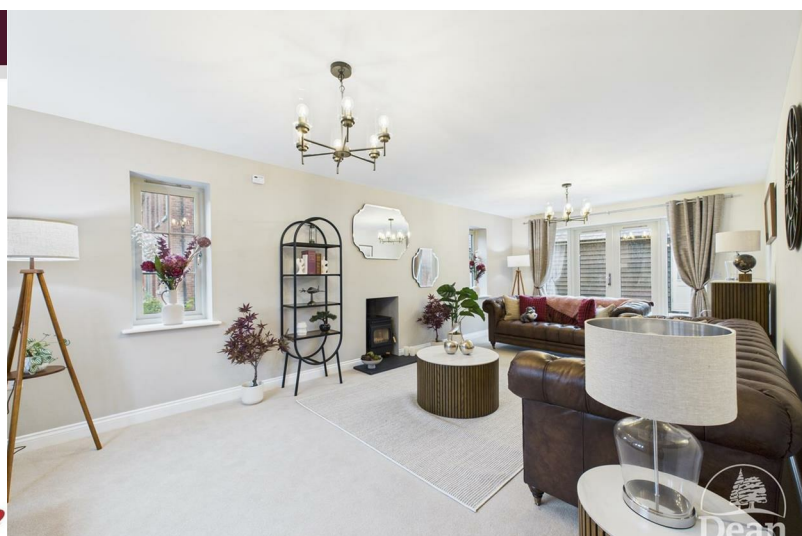




Plot 5, The Longleat, Cherry Tree Mews

Madley, Herefordshire, HR2 9LP

£350,000



LAST ONE OF THIS BUILD REMAININGDON'T MISS OUT*** The Longleat is a three bedroom open plan home with the master bedroom having its own en-suite , two further bedrooms and a family bathroom. The Longleat also benefits from off road parking for 2 cars. Built around a courtyard setting of just 10 Homes by Bell Homes a family business renowned for crafting high quality homes.



House Specification:

Kitchen:

- Choice of Mackintosh Kitchens
- Extra Deep and Tall Wall Units
- Glass Drawers Sides With Oak Drawer Boxes
- Le Mans Corner Unit
- Choice of Quartz to Kitchen Band A
- Choice of Wall Tiles to Kitchen Upto Band C
- Stainless Steel 1.5 Bowl Undermounted Sink to the Kitchen
- Quooker Tap in S/Steel to Kitchen
- Choice of Ceramic Floor Tiles to Kitchen upto Band C
- White Low Energy LED Downlighters

Appliances:

- AEG Built Under Double Oven
- AEG 4 Burner Induction Hob
- AEG Gloss Black Angled Chimney Hood
- AEG Full Height Frost Free Fridge/Freezer 50/50
- AEG Fully Integrated Dishwasher
- Washing Machine Space & Plumbing Provided

Bedrooms:

- Ensuite to Bedroom 1

Bathrooms:

- Geberit Selnova Sanitaryware
- Bristan Prism Brassware
- Family Bathroom with Over Bath Shower & Shower Screen
- Mira EV Thermostatic Shower Over Bath
- Mira Elevate Hinged Bathscreen
- Mira Shower Enclosure with Mira ERD Shower to Master Ensuite
- Shaver socket
- White Low Energy LED Downlighters

- Choice of Wall Tiles
- Choice of Floor Tiles

Heating & Energy Efficiency:

- Mitsubishi Ecodan Air Source Heat Pump
- Mitsubishi Hot Water Cylinder
- Underfloor Heating to Ground Floor
- Stelrad Radiators to First Floor
- White Towel Radiator to Bathroom
- White Towel Radiator to Ensuite/s

Electrical:

- Energy Efficient Lighting Installed throughout
- TV Point to Living Room and all Bedrooms
- External PIR Lighting to all Front/Rear Doors
- Telephone Point to Living Room, & Bedroom 1
- CAT 6 Data Points to Living Room, Study and Master Bedroom (Where applicable)
- USB Charging Ports Socket to Kitchen, Study and Living Room (Where applicable)
- Power Points with High Performance RCBO Protection
- Wired for High Speed Fibre Broadband Capabilities (Where Available)
- Loft Light
- Mains Powered Smoke Alarm to Hall & Landing with Battery Back Up
- Fully Fitted Security System
- Provision for Future Installation of Solar Panels

Internal Finishes:

- Painted Softwood Staircase
- Oak Cottage Style Internal Doors with Chrome Lever onRose
- Ironmongery

Choice of Carpets
White Painted Walls & Ceilings Throughout
Storage Cupboard to Hallway

External Finishes:

Pebble Grey Timber Windows & French Doors
Pebble Grey UPVC Fascia's
Black Cast Iron Effect Guttering
Pebble Grey Timber Front Doors
External Tap (Below kitchen window unless otherwise stated)
Electric Car Charging Point
External Power Point
Landscaped Front Gardens
Paved Patio area
Off Road Parking

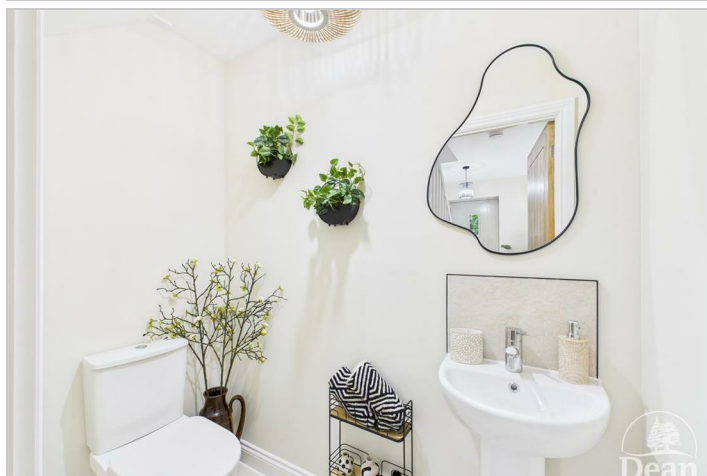
Please Note:

Images are from the show homes and are for marketing purposes.
Colour schemes and styles may change.

GDPR:

Please note that we will only pass your details onto Bell Homes for the purposes of arranging appointments to view.

If you do not wish to have your details passed onto Bell Homes, please let us know.



Consumer Notes: Dean Estate Agents Ltd have prepared the information within this website/brochure with care and co-operation from the seller. It is intended to be indicative rather than definitive, without a guarantee of accuracy. Before you act upon any information provided, we request that you satisfy yourself about the completeness, accuracy, reliability, suitability or availability with respect to the website or the information, products, services, or related graphics contained on the website for any purpose.

These details do not constitute any part of any Offer, Contract or Tenancy Agreement.

Photographs used for advertising purposes may not necessarily be the most recent photographs, although every effort is made to update photographs at the earliest opportunity. Any reliance you place on such information is therefore strictly at your own risk. All photographic images are under the ownership of Dean Estate Agents Ltd and therefore Dean Estate Agents retain the copyright. You must obtain permission from the owner of the images to reproduce them.

Tenanted Property – we are not always able to show the most recent condition of a property due to tenants' privacy and we may choose to show the photographs of the property when it was last vacant to at least allow clients some idea of the internal condition. Therefore, we would of course, urge you to view before making any decisions to purchase or rent the property and before any costs.

Energy Performance Certificates are supplied to us via a third party and we do not accept responsibility for the content within such reports.

PRC Certificates – Some ex-local authority properties have been repaired in recent years using the PRC Scheme wherein a certificate has been produced by a qualified property engineer. This certificate does not imply the suitability for a mortgage approval and you must satisfy yourself of the work carried out that may meet your lenders criteria.

As with leasehold property or new build development sites, you are likely to be responsible for a contribution to management charges and/or ground rent or a contribution to the development service charge. Please enquire at the time of viewing.

You may also incur fees for items such as leasehold packs and, in addition, you will also need to check the remaining length of any lease before you complete a mortgage application form.

Please ask a member of our team for any help required before committing to purchase a property and incurring expense.

Road Map




Hybrid Map



Terrain Map



Floor Plan

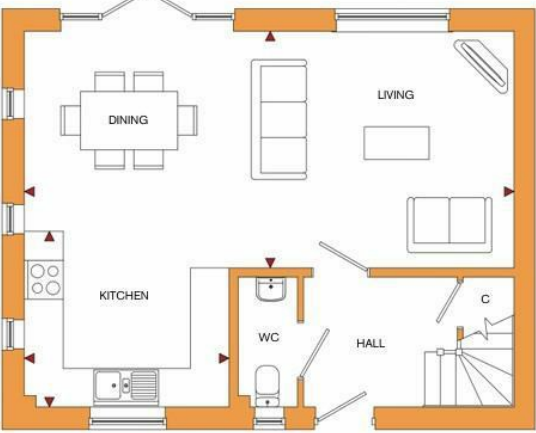


THE LONGLEAT


FLOOR PLANS

ROOM	IMPERIAL / "	METRIC / mm
Living / Dining	24' 10" x 12' 0"	7560 x 3660mm
Kitchen	10' 5" x 8' 11"	3160 x 2719mm

ROOM	IMPERIAL / "	METRIC / mm
Bedroom 1	11' 9" x 12' 0"	3568 x 3654mm
Bedroom 2	12' 10" x 8' 7"	3905 x 2617mm
Bedroom 3	9' 5" x 6' 10"	2873 x 2067mm
Bathroom	6' 6" x 6' 10"	1975 x 2067mm
En-Suite	4' 10" x 6' 10"	1480 x 2067mm





GROUND FLOOR




FIRST FLOOR

TOTAL FLOOR AREA
946ft² / 87.8m²



We strive to make each home and development as varied and interesting as possible. Therefore the above is for illustration purposes only and individual properties may vary. Please ask for details of specific properties. Every care has been taken with the preparation of this information, which has been produced for your guidance only and does not form part of a contract. The Plans are NOT TO SCALE, and may vary on site. Please do not use this information for purchase of furnishings and furniture.



Viewing

Please contact our Land & New Homes Office on 01594 835751 if you wish to arrange a viewing appointment for this property or require further information.

Energy Efficiency Graph

These particulars, whilst believed to be accurate are set out as a general outline only for guidance and do not constitute any part of an offer or contract. Intending purchasers should not rely on them as statements of representation of fact, but must satisfy themselves by inspection or otherwise as to their accuracy. No person in this firms employment has the authority to make or give any representation or warranty in respect of the property.

